



CHABAHAR PIPE

CHABAHAR PIPE



Chabahar Green Pipe Co. with the aim of improving the quality level of PP-RC pipes and fittings products, has been working with the most capable expert forces since 1992. What we have constantly emphasized in the field of production has been the use of intermittent research and development in order to benefit from the latest knowledge in the world in the production of PP-RC pipes and fittings. Therefore, Chabahar Green Pipe Co. has a large share of the production of hot and cold water construction water supply pipes exclusively, and all the specialists of this company, with the aim of developing and expanding the variety of products, are working day and night, relying on a quarter of a century of production experience.



www.chabahargreenpipe.com



chabahargreenpipe

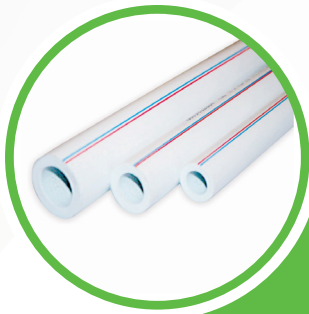
Producer of PP-RC Pipes and Fittings



سندبندی شرکت های
تاسیساتی و صنعتی ایران

مرکز تحقیقات راه، مسکن و شهرسازی

CHABAHAR PIPE



| | | |
|-------------------------------|--------------------------------|-------------------------------|
| 25 mm code: 3101025 | 63 mm code: 3101063 | |
| 32 mm code: 3101032 | 75 mm code: 3101075 | |
| 20 mm code: 3101020 | 40 mm code: 3101040 | 90 mm code: 3101090 |
| 50 mm code: 3101050 | 110 mm code: 3101110 | |

Pipe



| | |
|-------------------------------|-------------------------------|
| 20 mm code: 2201020 | 50 mm code: 2201050 |
| 25 mm code: 2201025 | 63 mm code: 2201063 |
| 32 mm code: 2201032 | 75 mm code: 2201075 |
| 40 mm code: 2201040 | |

Socket



| | |
|-------------------------------|-------------------------------|
| 20 mm code: 2311020 | 32 mm code: 2311032 |
| 25 mm code: 2311025 | 40 mm code: 2311040 |

Elbow 45°



| | | |
|-------------------------------|-------------------------------|-------------------------------|
| 20 mm code: 2301020 | 40 mm code: 2301040 | |
| 25 mm code: 2301025 | 50 mm code: 2301050 | 75 mm code: 2301075 |
| 32 mm code: 2301032 | 63 mm code: 2301063 | |

Elbow 90°



20x25
code: 2321001

Reducer Elbow 90°



20 mm
code: 2301090

Reducer Elbow 90°



www.chabahargreenpipe.com



chabahargreenpipe

Producer of PP-RC Pipes and Fittings



20 mm
code: 2501200

3D T-branch



20 mm **40 mm**
code: 2501020 code: 2501040

25 mm **50 mm** **75 mm**
code: 2501025 code: 2501050 code: 2501075

32 mm **63 mm**
code: 2501032 code: 2501063

Equal T-branch



25x20x20
code: 2115020

32x25x32
code: 2511004

40x32x40
code: 2511009

50x40x50
code: 2511012

63x40x63
code: 2511013

25x20x25
code: 2511002

40x20x40
code: 2511007

50x25x50
code: 2511010

63x25x63
code: 2511016

63x50x63
code: 2511014

32x20x32
code: 2511003

40x25x40
code: 2511008

50x32x50
code: 2511011

63x32x63
code: 2511015

Reducer T-branch



32x20
code: 2401320

40x25
code: 2401425

50x25
code: 2401525

63x25
code: 2401620

63x50
code: 2401650

32x25
code: 2401325

40x32
code: 2401432

50x32
code: 2401532

63x32
code: 2401632

75x40
code: 2401740

20x25
code: 2401220

40x20
code: 2401420

50x20
code: 2401520

50x40
code: 2401540

63x40
code: 2401640

75x63
code: 2401763

Reducer Socket



CHABAHAR PIPE



20x1/2 **20x3/4**
code: 2341001 code: 2341002

Wall Plated Male Elbow



20x1/2 **25x1/2**
code: 2331002 code: 23310054

Wall Plated Female Elbow



20x1/2 **25x3/4**
code: 2341003 code: 2341006

25x1/2
code: 2341005

Male Elbow



20x1/2 **25x3/4**
code: 2331001 code: 2331005

25x1/2 **32x1**
code: 2331003 code: 2331007

Female Elbow



20x1/2
code: 2301220

25x1/2
code: 2301225

**Wall Plated
Installation Bracket**



20x1/2
code: 1131126

**Wall Plated
Installation Bracket**

Producer of PP-RC Pipes and Fittings



| | | | | |
|--------------------------------|----------------------------------|----------------------------------|----------------------------------|------------------------------|
| 20x1/2 code: 2211001 | 25x3/4 code: 2211003 | 32x1 code: 2211004 | 50x1 1/2 code: 2112150 | 63x2 code: 2211006 |
| 25x1/2 code: 2211002 | 40x1 1/4 code: 2211005 | 75x2 1/2 code: 2211008 | | |

Female Socket



| | |
|--------------------------------|--------------------------------|
| 20x1/2 code: 2301120 | 25x1/2 code: 2301125 |
|--------------------------------|--------------------------------|

Wall Plated Installation Bracket



| | |
|--------------------------------|--------------------------------|
| 20x1/2 code: 2520105 | 25x3/4 code: 2520107 |
| 25x1/2 code: 2520106 | |

Wall Plated Female T-branch



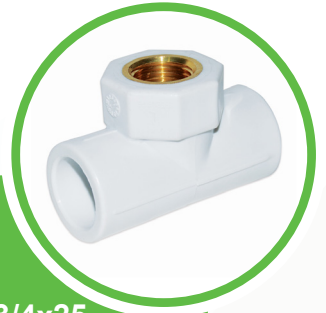
| | | |
|--------------------------------|----------------------------------|------------------------------|
| 20x1/2 code: 2221020 | 32x1 code: 2221032 | |
| 25x1/2 code: 2221025 | 40x1 1/4 code: 2221040 | |
| 25x3/4 code: 2221253 | 50x1 1/2 code: 2112050 | 63x2 code: 2221063 |

Male Socket



| | |
|-------------------------------|-------------------------------|
| 20 mm code: 2811020 | 32 mm code: 2811032 |
| 25 mm code: 2811025 | 40 mm code: 2811040 |

Pipe Cap



| | |
|-----------------------------------|-----------------------------------|
| 25x1/2x20 code: 2520101 | 25x3/4x25 code: 2520103 |
| 25x1/2x25 code: 2520102 | 32x1x32 code: 2520104 |

Female T-branch



سازمان صنعت، معدن و صنایع فلزی

سازمان بهداشت، درمان و آموزش پزشکی

سازمان مسکن و شهرسازی

سازمان منابع آبی و برق

CHABAHAR PIPE



16 mm
code: 2901016

25 mm
code: 2901025

20 mm
code: 2901020

32 mm
code: 2901032

Pipe Clamp



20 mm
code: 2201120

25 mm
code: 2201125

Installation Bracket



20 mm
code: 5590062

40 mm
code: 5590065

25 mm
code: 5590063

50 mm
code: 5590066

32 mm
code: 5590064

63 mm
code: 5590067

Brass Gate Shut-off Valve



20 mm
code: 2614020

32 mm
code: 2612032

25 mm
code: 2612025

Valve



20 mm
code: 180081020

32 mm
code: 180080001

25 mm
code: 180080025

Gate Valve Accessory



25 mm
code: 5590079

Iron Gate Shut-off Valve



www.chabahargreenpipe.com



chabahargreenpipe

Producer of PP-RC Pipes and Fittings



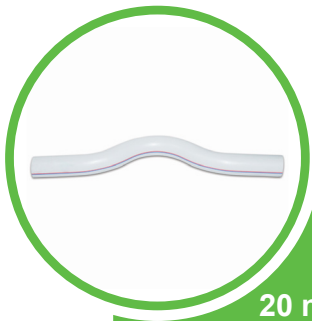
20 mm code: 2711020 25 mm code: 2711025

Union Fitting



20 mm code: 2701020 32 mm code: 2701032
25 mm code: 2701025 40 mm code: 2701040

Union Fitting



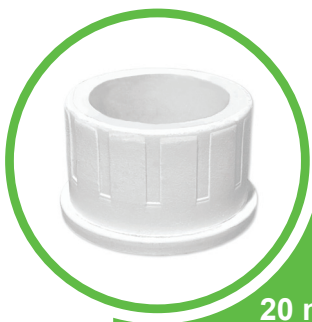
20 mm code: 3111020 32 mm code: 3111032
25 mm code: 3111025

Prefabricated Installation kit



20 mm code: 3122020 25 mm code: 3122025

Prefabricated Installation kit



20 mm code: 2701021 32 mm code: 2701033
25 mm code: 2701026 40 mm code: 2701041

Union Polymer



63x2
code: 2211007

Octagonal Female Socket



سازمان بهداشت ایران

سازمان بهداشت ایران

سازمان بهداشت ایران

سازمان بهداشت ایران

CHABAHAR PIPE



20 mm
code: 2840001

25 mm
code: 2840003

Long Thread Cap



20 mm
code: 2801020

32 mm
code: 2801032

25 mm
code: 2801025

Short Thread Cap



code: 5590071

Welding Accessory



code: 5590072

Pipe Cutter



20 mm
code: 2935020

32 mm
code: 2935032

25 mm
code: 2935025

40 mm
code: 2935040

Welding Socket

Producer of PP-RC Pipes and Fittings

Chabahar Pipe Fusion Instructions:

This is a general guide to socket fusion. Please reference Chabahar pipe PDB for specific heating time and insertion depths.

1. Cut pipe squarely. Assemble the male and female heating adapters on the welder then connect the welder to the power source.
2. Cut squarely and remove burrs or chips inside pipe ends.
3. Use the multi size metric chamfer to bevel the pipe to produce a 15° bevel.
4. Make a mark on the pipe for the insertion depth on the pipe for type A sockets according to below table.
5. Clean the pipe and fittings with a clean cloth and isopropyl alcohol.
6. Verify the proper heating temperature 260 °C(±10).
7. Insert the fittings and pipe simultaneously into the heater plate, making sure to insert the pipe completely into the female socket and the fitting completely onto the male socket.
8. Apply heat for the time listed on below table.
9. Remove the pipe and fitting from the heater plate, being careful not to torque or twist the pipe fitting. Insert the pipe into the female fitting aligning with the reference longitudinal and not over inserting the pipe past the previously marked depth.
10. Allow joint to cool for proper cooling time. Be sure to maintain support and pressure during the initial cooling time. Allow the joint to cool the total cooling time before any rough handling or stress is put on the joint.

| Pipe Size (mm) | Insertion Depth (mm) | Warm up Time (sec) | Cool down Time (min) |
|----------------|----------------------|--------------------|----------------------|
| 20 | 14 | 5 | 2 |
| 25 | 15 | 7 | 2 |
| 32 | 16.5 | 8 | 4 |
| 40 | 18 | 12 | 4 |
| 50 | 20 | 18 | 4 |
| 63 | 24 | 24 | 6 |
| 75 | 25 | 30 | 8 |



C H A B A H A R P I P E

Unit 23 ,4th Block, Mirzahassani Ave,
Ghaem Magham Farahani St, Shahid Beheshti Blv,
Tehran, Iran

Tel: 88728281 - 88724156 - 88726252

Postalcode: 1586767716 Fax:88554641

www.chabahargreenpipe.com
info@chabahargreenpipe.com

 [instagram:
chabahargreenpipe](https://www.instagram.com/chabahargreenpipe)